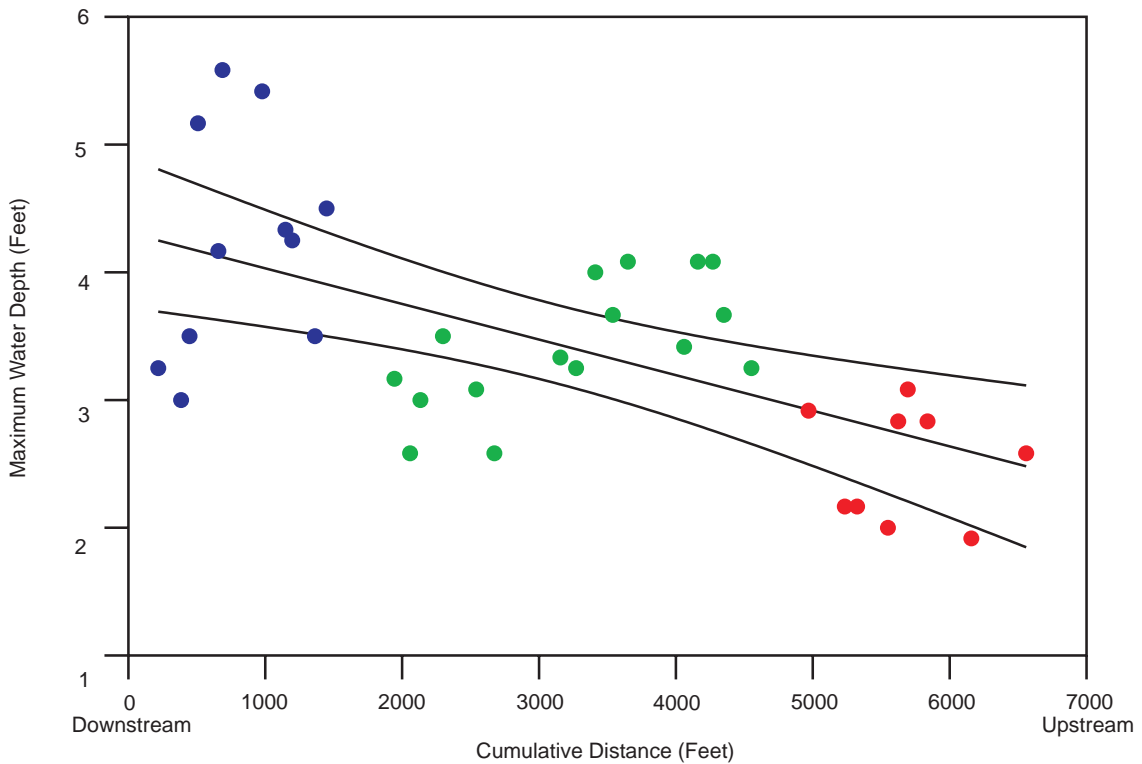
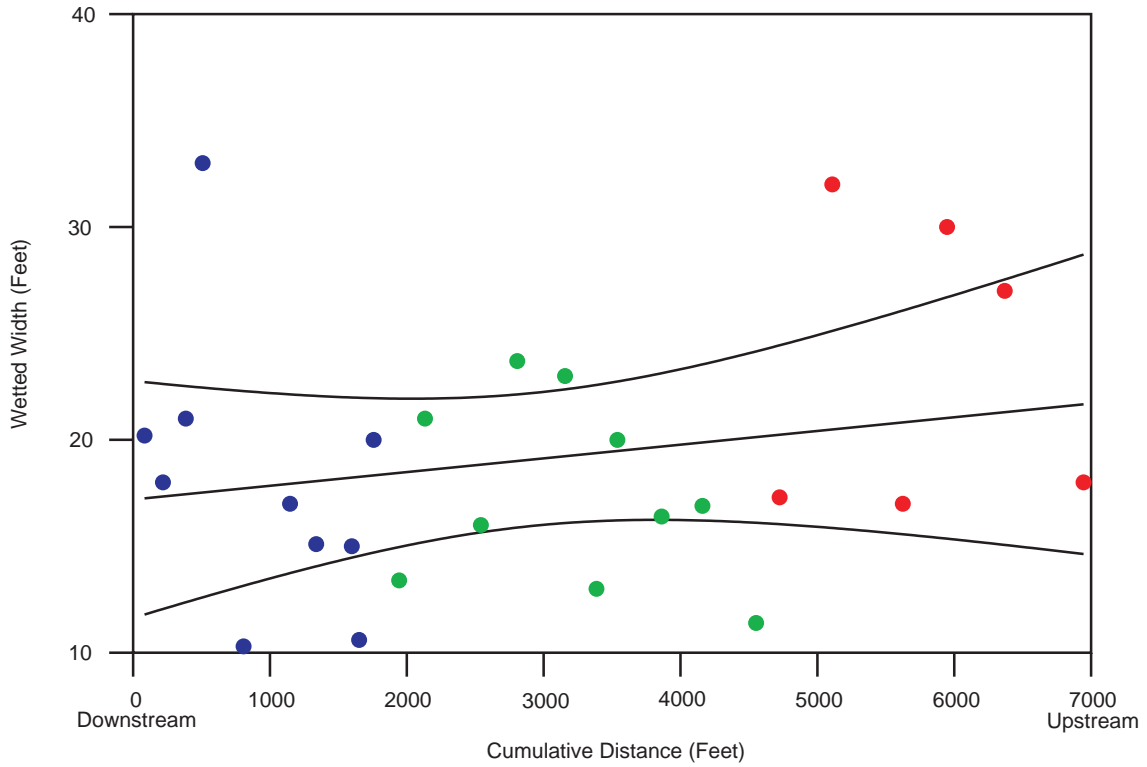


Attachment 21

WATER WIDTH AND MAXIMUM POOL DEPTH PROFILES WITHIN THE MUKWONAGO RIVER UPSTREAM OF LULU LAKE: SUMMER 2008



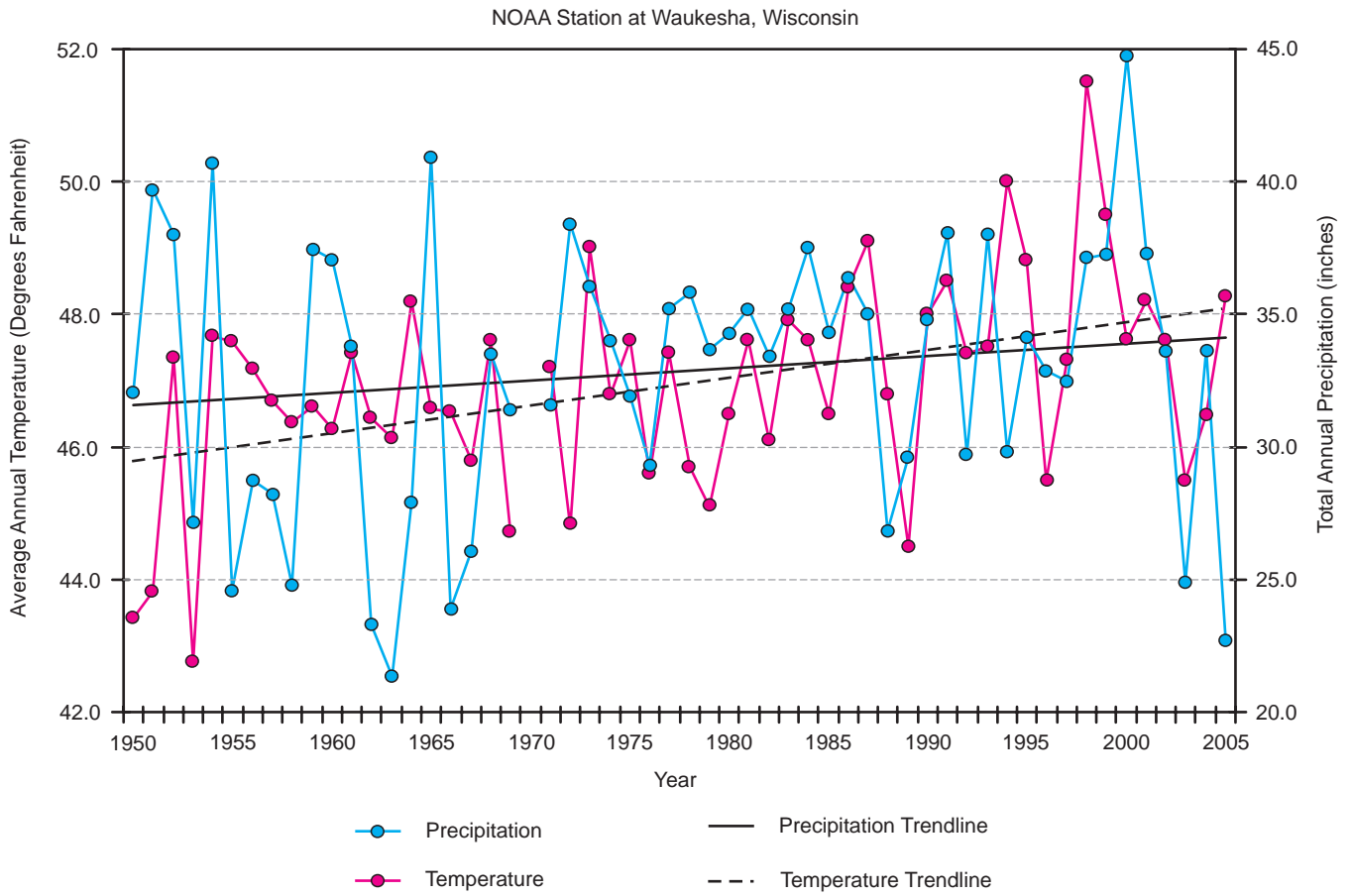
● Lulu Lake Upstream to Nature Conservancy Bridge ● Nature Conservancy Bridge Upstream to Nature Road ● Upstream Nature Road

NOTE: There are more data points associated with the maximum pool depth graph, because this includes additional data taken in between the transect lines as shown on Attachment 19.

Source: SEWRPC.

Attachment 22

**AVERAGE ANNUAL TEMPERATURE AND TOTAL ANNUAL PRECIPITATION FOR THE NOAA
WAUKESHA WEATHER RECORDING STATION NEAR THEEAGLE SPRING LAKE WATERSHED: 1950-2005**

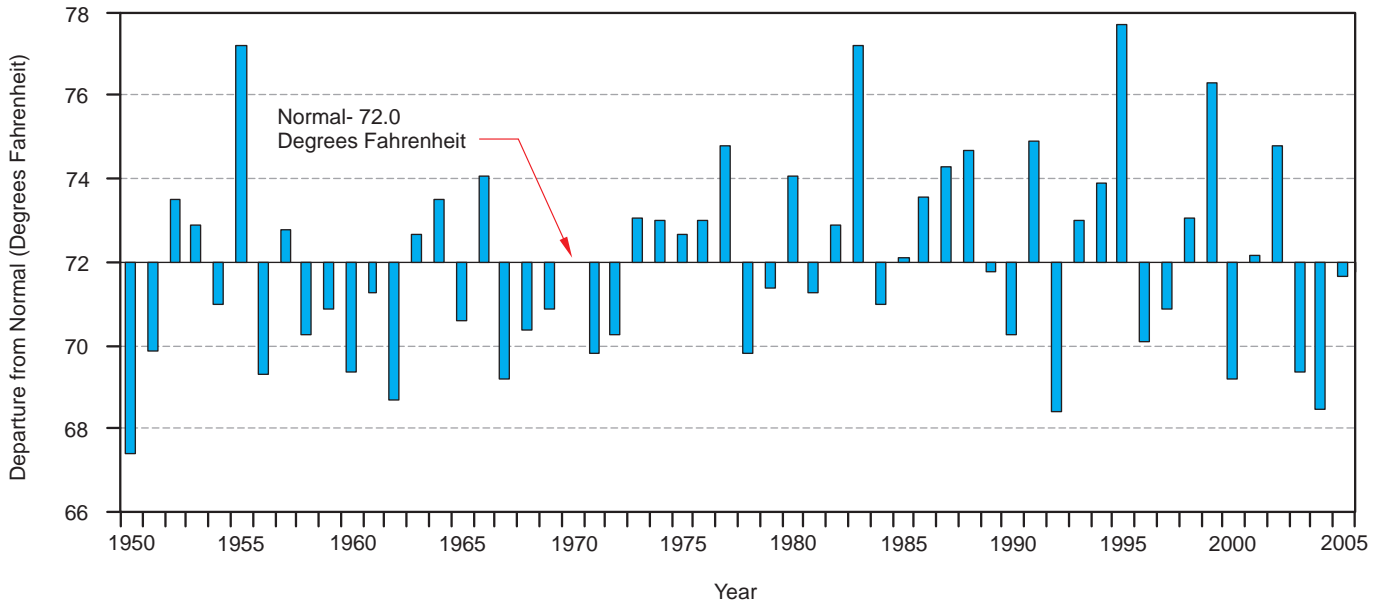


Source: National Oceanic and Atmospheric Administration, National Climatic Data Center, and SEWRPC.

Attachment 23

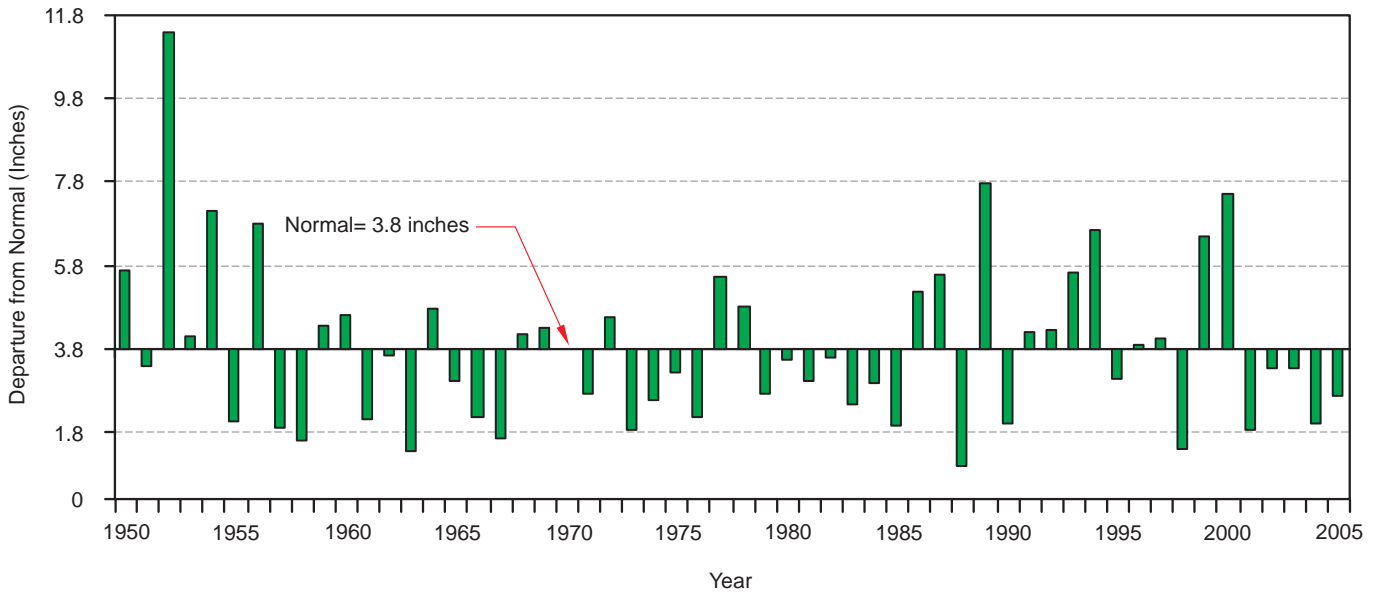
JULY AVERAGE TEMPERATURE AND PRECIPITATION DEPARTURES FROM NORMAL AT THE WAUKESHA STATION: 1950-2005

July Temperature at Waukesha, Wisconsin



Note: Normal is defined as 72 degrees Fahrenheit, which is the average temperature in the month of July from 1950-2005.

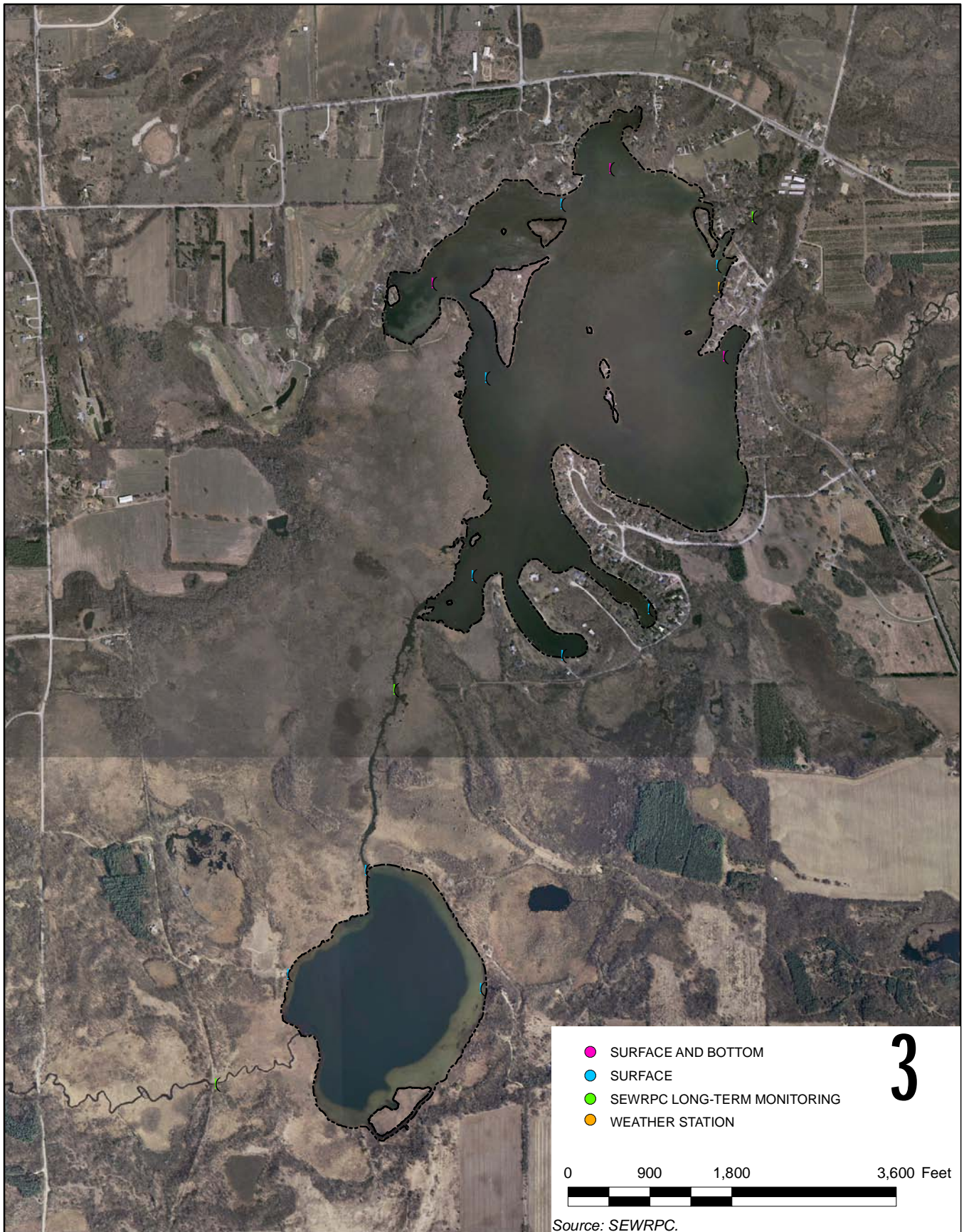
July Precipitation at Waukesha, Wisconsin



Note: Normal is defined as 3.8 inches, which is the average precipitation in the month of July from 1950-2005.

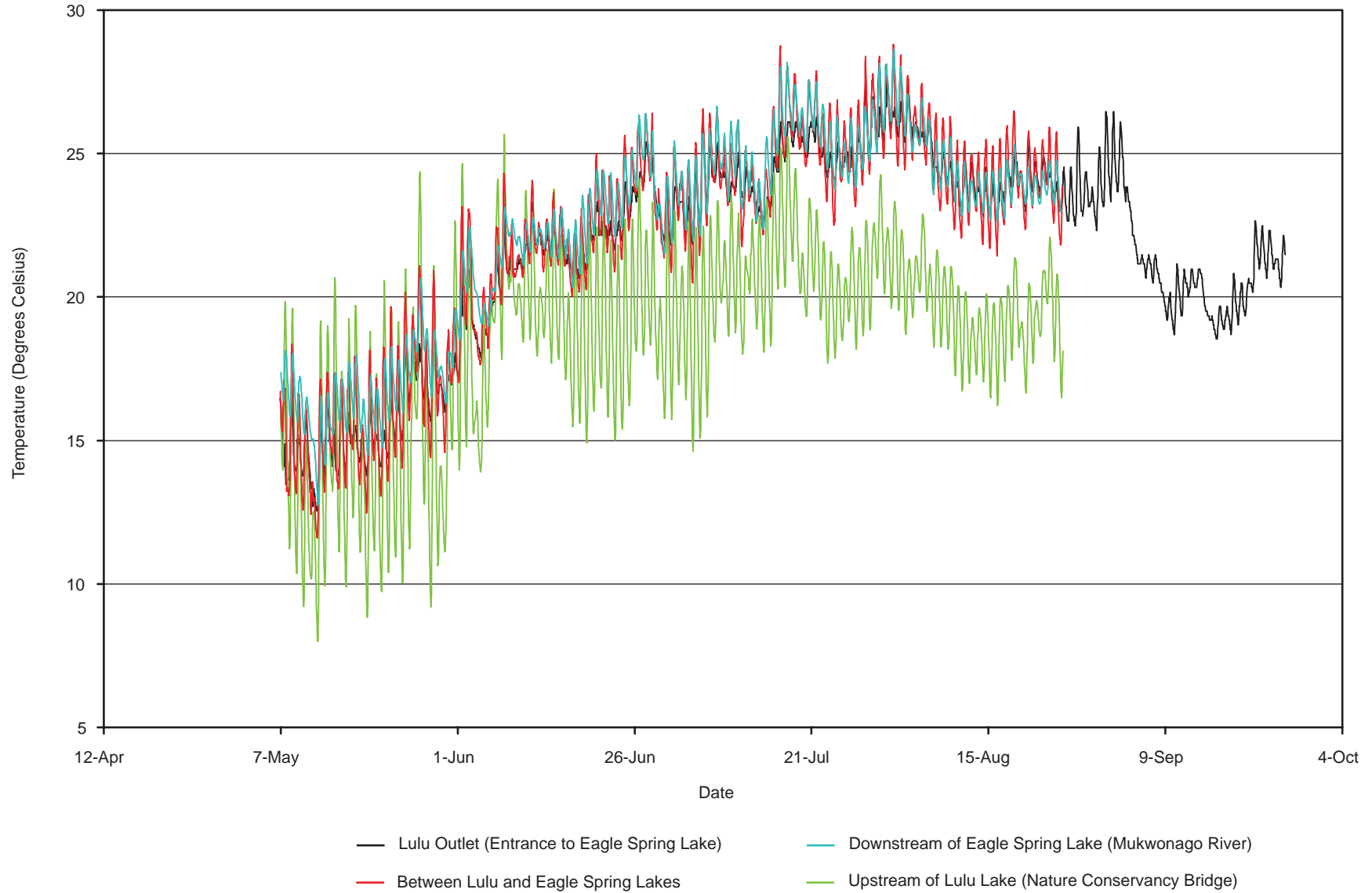
Source: National Oceanic and Atmospheric Administration, National Climatic Data Center, and SEWRPC.

WEATHER STATION AND TEMPERATURE LOGGER LOCATIONS: 2007-2008



Attachment 25

HOURLY SURFACE WATER TEMPERATURES AT SITES UPSTREAM OF LULU LAKE TO DOWNSTREAM OF EAGLE SPRING LAKE: MAY-SEPTEMBER 2008



Source: SEWRPC.